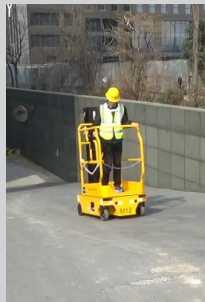


# FontexX M-series



## All electrical plus vertical boom lift M-series

- Without hydraulic oil in driving & steering system
- Differential drive with a multi-axis joystick (no thumb switches)
- Very stable at height
- Forkliftable in any side, easy to handle



**No leaking** points or grease points from both drive and steering systems as compared with hydraulic drive and hydraulic steering.

**More energy efficiency:** longer working hours before charging.

**Less wiring and connecting points,** simplicity (for maintenance) due to no hydraulic system in driving and steering.

**Superior maneuverability:** the machine follows the direction joystick pointed.

**True zero turning radius:** suitable for being used in tight ground working spaces.

Designed with improved structural rigidity, and tolerance control, It meets ANSI92.6 Standard and It is CE certified.



# M-series

Technical information

Model	M8	M12
Working Height	14ft	18ft
	4.58m	5.66m
Platform Height	8.4ft	12ft
	2.58m	3.66m
Platform Length	3ft 4in	3ft 4in
	1.02m	1.02m
Platform Width	2ft 6in	2ft 6in
	76mm	76mm
Height - Stowed	6ft 3in	6ft 3in
	1.9m	1.9m
Length - Stowed	4ft 6in	4ft 6in
	1.37m	1.37m
Overall Width	2ft 6in	2ft 6in
	76mm	76mm
Ground Clearance	2.36in	2.36in
	60mm	60mm
Platform Capacity	500lb	500lb
	227kg	227kg
Drive Speed - Stowed	4km/h	4km/h
Drive Speed - Raised	0.8km/h	0.8km/h
Gradeability	25%	25%
Turning Radius - Inside	0	0
Turning Radius - Outside	4ft 8in	4ft 8in
	1.42m	1.42m
Wheel Size-Rear Wheel	9x3.15in, 0.5kW	9x3.15in, 0.5kW
	230x80mm	230x80mm
Wheel Size-Front Wheel	8x3in	8x3in
	203x76mm	203x76mm
Power	24V DC	24V DC
Batteries	2x12V 150 Ah	2x12V 150 Ah
Weight	1609lb	1863lb
	730kg	845 kg

