

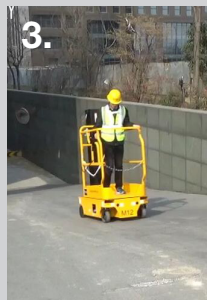
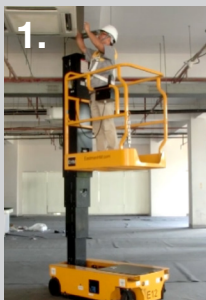
# FontexX E-series

Completely Electric (No Hydraulic Fluid)  
Low-Height Mast Series



## The world first pure electric aerial working platform E-series

- Without hydraulic oil - completely electric
- Outstanding preciseness in lifting & lowering
- Superior maneuverability
- Strong stability at height
- No thumb switch, easy to operate



1. High energy efficiency, sustainable long working time
2. Small in size, light in weight, easy to pass through small openings
3. Great gradeability
4. Strong stability at height
5. Drive and control system are simple, low use- and maintenance costs.



Model	E8	E12
Working Height	14ft	18ft
	4.58m	5.66m
Platform Height	8.4 t	12ft
	2.58m	3.66m
Platform Size LxW	3ft 4inx2ft 6in	3ft 4inx2ft 6in
	1.02mx0.76m	1.02mx0.76m
Height - Stowed	6ft 3in	6ft 3in
	1.9m	1.9m
Length - Stowed	4ft 6in	4ft 6in
	1.37m	1.37m
Overall Width	2ft 6in	2ft 6in
	0.76m	0.76m
Ground Clearance	2.4in	2.4in
	60mm	60mm
Platform Capacity	500 lb	500 lb
	227kg	227kg
Drive Speed - Stowed	2.5 mph	2.5 mph
	4km/h	4km/h
Drive Speed - Raised	0.5 mph	0.5 mph
	0.8km/h	0.8km/h
Gradeability	25%	25%
Turning Radius - Inside	0	0
Turning Radius - Outside	4ft 8in	4ft 8in
	1.42m	1.42m
Lift/Lower Speed	12s/16s	12s/16s
Voltage 24V DC 24V DC		
Wheel Size-Rear Wheel	9inx3.15in,0.5kW	9inx3.15in,0.5kW
	230mmx80mm	230mmx80mm
Wheel Size-Front Wheel	8inx3in	8inx3in
	203mmx76mm	203mmx76mm
Power	24V DC	24V DC
Batteries	2x12V 150 Ah	2x12V 150 Ah
Weight	1609lb	1852lb
	730kg	840kg

